

Ordering Information

| Products | Catalog No. | Specimen | Kit Size |
|--|-------------|--------------|----------|
| POCBio Dengue NS1 Antigen Rapid Test | LATT01-C25 | WB/S/P | 25 |
| POCBio Dengue NS1 Antigen Rapid Test | LATT01-C50 | WB/S/P | 50 |
| POCBio Dengue IgM/IgG Rapid Test | LATT02-C50 | WB/S/P | 50 |
| POCBio Malaria Pf Rapid Test | LATT03-C50 | Whole Blood | 50 |
| POCBio Malaria Pf/Pv Rapid Test | LATT04-C50 | Whole Blood | 50 |
| POCBio Malaria Pf/Pan Rapid Test | LATT05-C50 | Whole Blood | 50 |
| POCBio S.Typhi/Paratyphi Ag Combo Rapid Test | LATG04-C25 | WB/S/P/Feces | 25 |
| POCBio Typhoid IgM/IgG Rapid Test | LATT06-C50 | WB/S/P | 50 |
| POCBio Dengue IgG/IgM and NS1 Combo Rapid Test | LATT07-C25 | WB/S/P | 25 |

Smarter Packaging, Powered by POCBio

Innovative packaging designed to deliver more – with less.

Size reduced by
30% ~ 50%



Other Brands vs POCBio

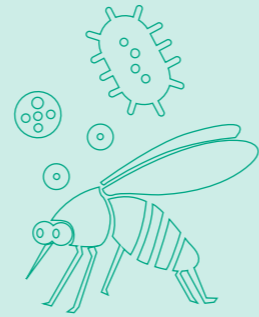
- M** Compact Design
- E** Eco-Friendly
- ↓** Shipping Costs Reduces by 30%+
- S** 50% Smaller than Competitors



Tropical Disease Diagnostic Solutions
Empowering Global Health Through Innovation

Dengue • Malaria • Typhoid





Dengue Fever Rapid Test Series

Epidemiological Overview

40–50% of the global population lives in dengue-endemic regions, with an estimated 390–400 million infections annually, including ~100 million symptomatic cases.

— Source: WHO, Nature, Medscape

Intended Use

POCBio Dengue Rapid Tests are designed for the qualitative detection of NS1 Ag (Non-structural protein 1) and/or IgM and IgG antibodies to the dengue virus in human whole blood, serum, or plasma. This test serves as an aid in diagnosing dengue infection. It is a non-automated assay that does not require additional instruments. The test is intended for use by healthcare professionals and trained laboratory personnel.

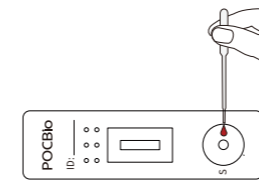
Clinical Performance

| Test | Specimen | Sensitivity | Specificity |
|--------------------------------------|----------|-------------|-------------|
| POCBio Dengue NS1 Antigen Rapid Test | WB/S/P | 98.7% | 99.4% |
| POCBio Dengue IgM/IgG Rapid Test | WB/S/P | 96.7% | 99.6% |

Test Procedures

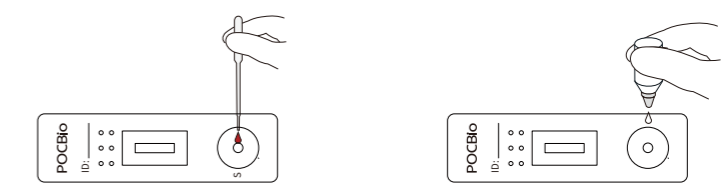
For Dengue NS1 Ag Test

a. Serum or plasma sample



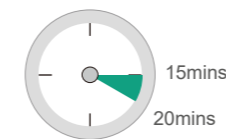
Dispense 2 drops of specimen vertically into the "S" well using the provided dropper.

b. Whole blood sample

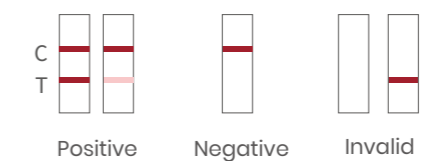


1. Dispense 2 drops of specimen vertically into the "S" well using the provided dropper.

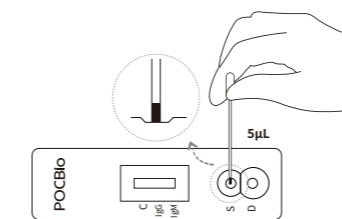
2. Dispense 1 drop of sample diluent.



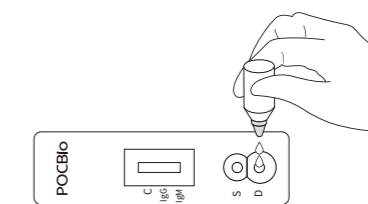
Wait for 15 minutes. Interpret the result between 15–20 minutes.



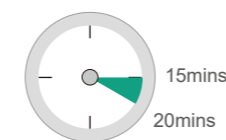
For Dengue IgM/IgG Test



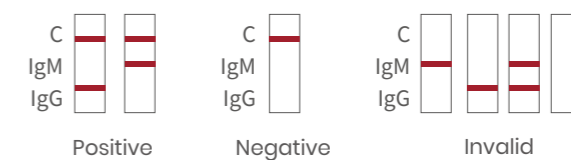
1. Gently squeeze and release the dropper bulb to collect specimen until reaching 5 µL mark, touch the dropper tip to the pad of the "S" well to add all collected specimen.

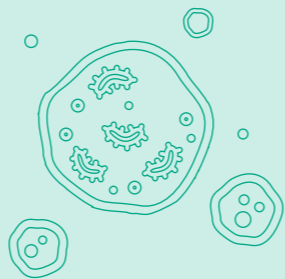


2. Dispense 2 drops of sample diluent vertically into "D" well immediately.



Wait for 15 minutes. Interpret the result between 15–20 minutes.





Malaria Rapid Diagnostic Test Series

Epidemiological Overview

In 2022, malaria caused an estimated 249 million cases and 608,000 deaths worldwide, with 94% of cases in the WHO African Region.

— Source: WHO World Malaria Report 2023

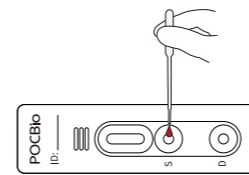
Intended Use

POCBio Malaria Rapid Tests are designed for the qualitative detection of Plasmodium falciparum HRP-II and Plasmodium species-pan pLDH (covering P. falciparum, P. vivax, P. malariae, and P. ovale) in human whole blood. This test serves as an aid in diagnosing Malaria infection. It is a non-automated assay that does not require additional instruments. The test is intended for use by healthcare professionals and trained laboratory personnel.

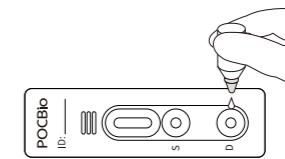
Clinical Performance

| Test | Specimen | Sensitivity | Specificity |
|----------------------------------|-------------|------------------|-------------|
| POCBio Malaria Pf Rapid Test | Whole Blood | 99.3% | 99.8% |
| POCBio Malaria Pf/Pv Rapid Test | Whole Blood | PF99.3%/PV99.1% | 99.8% |
| POCBio Malaria Pf/Pan Rapid Test | Whole Blood | PF99.6%/Pan99.1% | 99.7% |

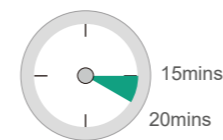
Test Procedures



1. Gently squeeze and release the dropper bulb to collect specimen until reaching 5 µl mark. Touch the dropper tip to the pad of the "S" well to add all collected specimen.

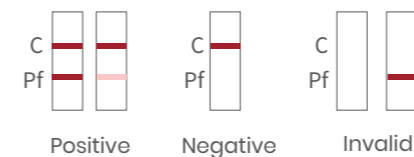


2. Dispense 3 drops of sample diluent vertically into "D" well immediately.

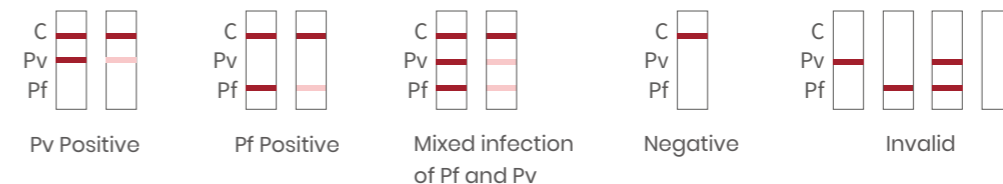


Wait for 15 minutes. Interpret the result between 15–20 minutes.

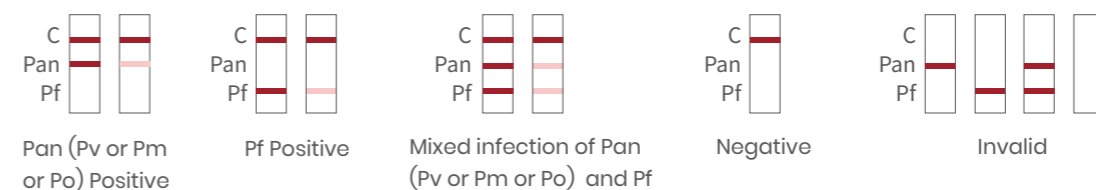
Malaria Pf

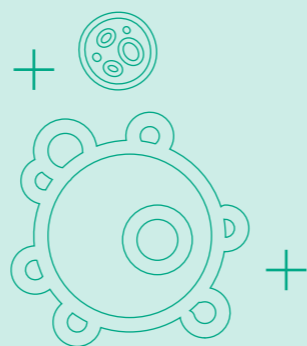


Malaria Pf/Pv



Malaria Pf/Pv





Typhoid & Paratyphoid Rapid Test Series

Epidemiological Overview

Typhoid fever remains a major global health burden, causing approximately 9–11 million cases and 110,000–140,000 deaths annually, primarily in low-resource settings.

— Source: WHO, ScienceDirect, CDC Typhoid Global Burden Update

Intended Use

The POcBio Typhoid Test Series detects IgM/IgG antibodies or S. Typhi/Paratyphi antigens in human whole blood, serum, plasma, or feces. It provides a quick alternative to culture-based diagnostics in field settings or during outbreaks.

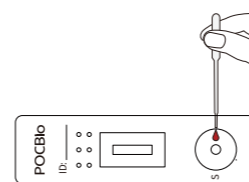
Clinical Performance

| Test | Specimen | Sensitivity | Specificity |
|--|----------|--------------------------------------|-------------|
| POcBio S.Typhi/Paratyphi Ag Combo Rapid Test (whole blood) | WB/S/P | Paratyphi Ag92.3% / S. Typhi Ag95.5% | 99.20% |
| POcBio S.Typhi/Paratyphi Ag Combo Rapid Test (fecal) | Feces | Paratyphi Ag93.8% / S. Typhi Ag96.2% | 99.50% |
| POcBio Typhoid IgM/IgG Rapid Test | WB/S/P | IgG93.8%/IgM92.8% | 99.70% |

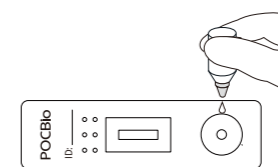
Test Procedures

For S.Typhi/Paratyphi Ag Combo

a. Whole blood, Serum or plasma sample:

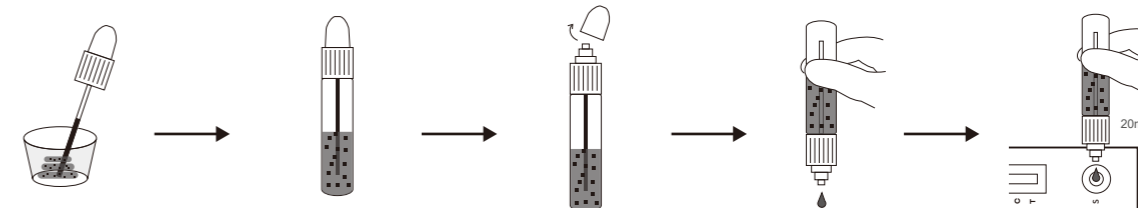


1. Dispense 1 drop (or 30 µL by pipette) of specimen vertically into the "S" well using the provided dropper.

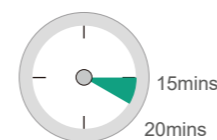


2. Dispense 1 drop of sample diluent.

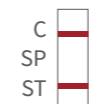
b. Fecal specimen:



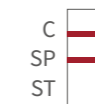
- For solid feces, collect a pea-sized sample (2–5 sites) with the applicator stick; for watery feces, add 2 drops using the dropper—then reinsert the stick or cap, tighten, and shake vigorously to mix
- Rotate the diluent/sample collector tube cap clockwise to loosen, then remove the cap completely. Invert the tube and discard the first two drops of diluent.
- Dispense 2 drops (about 80 µL) of sample which has been mixed evenly and without air bubble into the "S" Well.



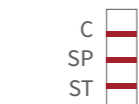
Wait for 15 minutes. Interpret the result between 15–20 minutes.



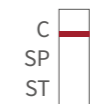
s.Typhi Positive



s.Paratyphi Positive



Mixed infection of s.Typhi and s.Paratyphi

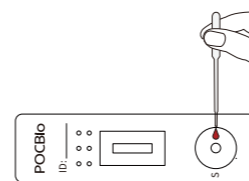


Negative

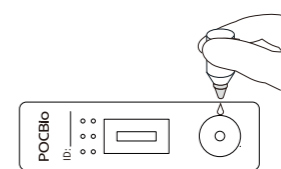


Invalid

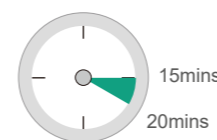
For Typhoid IgM/IgG



1. Dispense 1 drop of specimen vertically into the "S" well using the provided dropper.



2. Dispense 1 drop of sample diluent.



Wait for 15 minutes. Interpret the result between 15–20 minutes.



Positive



Negative



Invalid